



TRANE®

LET'S GO BEYOND™



Products and Systems Solutions Line Card
Trane New York/New Jersey

Water-Cooled Chillers



Model CGWR

Scroll Compressors - 20 thru 70 Tons; R-410a



Series R Model RTWD

Helical Rotary Compressor - 80 thru 250 Tons; Dual refrigerant, R-134a or next gen R-513a



Optimus™ Model RTHD

Optional Variable Speed Helical Rotary Compressor - 150 thru 450 Tons; R-134a



Model CICA

Scroll Modular Chiller, up to 10 unit array; 20 thru 50 tons, ASHRAE 90.1-2013 Compliant, R-410A



Model CICB

Scroll Chiller, 30 ton capacity, expandable 10x. <15 HP/circuit (NYC HP operator code), ASHRAE 90.1-2013 Compliant, R-410A

Centrifugal Chillers



Series S Model CVHS

CenTraVac® Chiller - Oil-Free Compressor - 180 thru 390 Tons, R-123; or 180 thru 350 Tons, R-514A



Model CVHE CenTraVac Chiller

3-Stage Compressor - 120 thru 500 Tons; R-123 or R-514A



Model CVHF CenTraVac Chiller

2-Stage Compressor - 325 thru 2000 Tons; R-123 or R-514A



Model CVHL CenTraVac Chiller

Compressor for Elevated Chilled Water Temperatures - 400 thru 1800 Tons; R-123 or R-514A



Model CDHF CenTraVac Chiller

Multi-Stage Dual Compressor - 1500 thru 3950 Tons; R-123 or R-514A



Model CVHH CenTraVac Chiller

Multi-stage, Dual Compressor, 900 thru 2000 Tons; R-1233zd



Model CDHH CenTraVac Chiller

Multi-stage, Dual Compressor 1800 thru 4000 Tons; R-1233zd



Model HDWA Agility™ Chiller

175 to 425 ton - 60 Hz, 50 Hz using either R-513A or R-134A

Air-Cooled Chillers



Model CCAR

Scroll Compressor with Air-Cooled Condenser; 20 thru 70 Tons; R-410a



Model RTUD

Helical Rotary Compressor with Air-Cooled Condenser - 80 thru 250 Tons; R-134a



Model CGAM

Scroll Compressor - 20 thru 130 Tons; R-410a



Series R RTAC

Helical Rotary Chiller - 140 thru 500 Tons; R-134a



Sintesis™ Model RTAF

Variable Speed Helical Rotary Compressor - 110 thru 500 Tons; R-134a or next gen R-513a



Stealth™ Model RTAE

Variable Speed Helical Rotary Compressor - 150 thru 300 Tons; Up to 20 IPLV, As low as 92 dBA, R-134a

Trane Earthwise™ Systems



Prepackaged Equipment & Controls Intelligent VAV, Thermal Ice Storage, Central Geothermal, Low Temp/Low Flow

Air Handling Systems



Compact Vertical Blower Coil Model BCCD

Indoor; 800-2000 CFM; ECM Motors, Factory-Engineered & Mounted Controls



Blower Coil Model BCHD/BCVD

Indoor; 400 thru 3000 CFM; ECM motors; Factory-Engineered & Mounted Controls



Performance Climate Changer™ Model PSCA

Indoor & Outdoor; 1,500 to 60,000 CFM, 2" or 3" R-13 Foam Insulated Panels, Variable Aspect Ratio



Performance Climate Changer Model UCCA

Indoor or Outdoor; 1500 thru 15000 CFM; 2" R-13 Foam Insulated Panels; Factory-Engineered & Mounted Controls



Performance Climate Changer Model CSAA

Indoor & Outdoor; 1500 thru 60000 CFM; 2" R-13 Foam Insulated Panels; Factory-Engineered & Mounted Controls



Trane Custom

Indoor & Outdoor; 1500 thru 200000 CFM; -12.0 to +12.0 inches w.g; Thermal Performance with R-Values up to 25

Terminal Products



CoolSense™ Terminal Unit

Up to 1300 CFM; Variable speed ECM or constant-fan speed; No heat, modulating hot-water heat, staged electric heat, or modulating (SCR) electric heat; factory-mounted Tracer UC400 controller (available with Air-Fi wireless)



VariTrane™ Model VC*F

Single Duct Variable Air Volume Boxes; 225 thru 8000 CFM



VariTrane Model VDDF

Dual Duct Variable Air Volume Boxes; 350 thru 4000 CFM



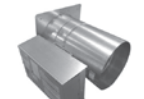
VariTrane Model V**F

Fan-Powered Variable Air Volume Boxes; 350 thru 4000 CFM; Parallel or Series Configuration



VariTrane Model L**F

Low Height Fan-Powered Variable Air Volume Boxes; 350 thru 4000 CFM; Parallel or Series Configuration



VariTrane Model VRRF

Round Inlet/Round Outlet Retrofit Variable Air Volume Boxes; 225 thru 4000 CFM



Model VUVE

Vertical Unit Ventilators; 750 thru 1500 CFM



Model HUVH

Horizontal Unit Ventilators; 750 thru 2000 CFM



UniTrane™ Model FC*B

Fan Coil; 200 thru 1200 CFM



Force-Flo™ Model FF*B

Cabinet Heater; 200 thru 1200 CFM



Model UHS/UHP

Propeller Unit Heaters; Hydronic & Steam

EcoWise

The Ingersoll Rand EcoWise™ portfolio of products designed to lower environmental impact with next-generation, low global warming potential (GWP) refrigerants and high-efficiency operation is part of our climate commitment to increase energy efficiency and reduce the greenhouse gas emissions (GHG) related to our operations and products.

All Trane Centrifugal Chillers, Series R RTAC (Air-Cooled) and Sintesis Model RTAF (Air-Cooled) are under the EcoWise portfolio of products.



The entire CenTraVac chiller portfolio earned third-party verification through its product-specific Type III Environmental Product Declaration (EPD) Registration: your assurance of a sustainable choice.



Trane also leads the industry with the most comprehensive chiller testing facilities. An AHRI Certified™ selection predicts the performance of your chiller based on laboratory testing. An AHRI verified test loop tests the actual performance of your chiller in conformance to the AHRI Standard. So, testing your chiller on an AHRI verified test loop before it leaves the factory ensures, through documentation, that your chiller's predicted performance matches the AHRI Certified selection, while also substantiating the pre-installation quality of the chiller, helping ensure a trouble-free startup.

All Trane Centrifugal Chillers are myTEST certified.



**Model UHWA/UHAA/
UHRA/UHXA/UHEC/UHCA**
Electric Unit Heaters

Indoor Gas Heating Units
Unit Heaters & Duct Furnaces

Packaged Rooftops

Impack®
Cooling, Gas/Electric, & Heat Pump; 1.5 thru 5 Tons

**Precedent™ 17 Plus
Packaged Rooftops**
Cooling & Gas/Electric; 17 SEER; 3 thru 5 Tons

**Precedent &
Precedent with eFlex™**
Cooling, Gas/Electric, Air-Source or Water-Source Heat Pump; eFlex Variable Speed Compressor; 3 thru 17.5 Tons

Voyager™ & Voyager with eFlex
Cooling, Gas/Electric, Air-Source or Water-Source Heat Pump, eFlex Variable Speed Compressor, 12.5 thru 25 Tons; eFlex 12.5 thru 17.5 Tons

Foundation™
Cooling, Gas/Electric; Adapts to Trane and Competitors Roof Curbs; 3 thru 25 Tons

Voyager Commercial
Cooling, Gas/Electric; eStage™ Multi-Stage Compressors, 27.5 thru 50 Tons

Intellipak™ I
Cooling, Gas/Electric, Hot Water, Steam; 20 thru 130 Tons; Available with eFlex Variable Speed Compressor available for 40 thru 75 Tons

Intellipak II
Cooling, Gas/Electric, Hot Water, Steam; Air-Cooled and Evaporative Condenser; 90 thru 162 Tons; Available with eFlex Variable Speed Compressor available for 90-150 Tons

Intellipak™ with Symbio™ 800
Cooling, Gas/Electric, Hot Water, Steam; Air-Cooled and Evaporative Condenser; 20 thru 75 Tons; Available with eFlex Variable Speed Compressor

Dedicated Outdoor Air Rooftops

Horizon™ Model OA
Packaged Outdoor Air Units; Cooling, Gas/Electric, Air-Source or Water-Source Heat Pump; Heat Recovery; 500 thru 13500 CFM

Make-Up Air Gas Heating Units

Model DFIA/DFOA
Direct Fired Make-Up Air Units; Indoor & Outdoor; 225 thru 9075 MBH

Model GSAA
Indoor Gas-Fired Make-Up Air Handlers; Standard & High Efficiency; 100 thru 1200 MBH

Model GRAA
Outdoor Gas-Fired Make-Up Air Handlers; 100 thru 1200 MBH

Model AHOA
Packaged Air Handlers; Cooling, Make-Up Air, & Ventilation

Split Systems

Split Systems
Cooling & Heat Pump; Gas, Electric, or Hot Water Heat; 1.5 thru 5 Tons

Odyssey™ Split Systems
Cooling & Heat Pump; Electric, Hot Water, Steam Heat; 6 thru 25 Tons

Model RAUJ
Air-Cooled Condensing Units; Available with Remote Chiller Evaporators; 20 thru 120 Tons

Model CAUJ
Air-Cooled Condensers; 20 thru 120 Tons

Self-Contained Systems

Intellipak Modular Series
Commercial, Self-Contained Units; Water-Cooled or Air-Cooled; 20 thru 35 Tons

Intellipak Signature Series
Commercial, Self-Contained Units; 20 thru 110 Tons (Water-Cooled); 20 thru 60 Tons (Air-Cooled)

Water-Source Heat Pumps

Axiom™ Model GEH/GEV
1/2 thru 15 Tons (Horizontal); 1/2 thru 25 Tons (Vertical)

Axiom Model EXH/EXV
High-Efficiency; ECM Motors; 1.5 thru 6 Tons

Axiom Model DXH/DXV
High-Efficiency 2-Stage; ECM Motors; 2-Stage Compressor; 2 thru 6 Tons

Axiom Model VSH/VSV
High-Efficiency Variable Speed; ECM Motors; Variable Speed Compressor; 2 thru 5 Tons

Axiom Model GEC
High-Efficiency Console; 1/2 thru 1.5 Tons



Axiom Model GET
High-Efficiency Vertical Stack; 3/4 thru 3 Tons

Axiom Model EXW
Water to Water 5 thru 20 Tons

ProSpace™ Ductless Solutions

Packaged Terminal Air Conditioner
Model PTAC; 7, 9, 12, 15 MBH; As low as 48 dBA

Trane®/Mitsubishi Electric M&P-Series Single Zone Ductless Split Systems

Outdoor Units:
P-Series Heat Pump or Cooling-Only
12-42mbh
P-Series - Hyper-Heat
100% Heating Output at 5°F
30-42mbh
M-Series - Heat Pump or Cooling-Only
6-36 mbh
M-Series - Hyper-Heat
100% Heating Output at 5°F
6-18 mbh

Indoor Units:
Wall-Mounted
6-36 mbh
Ceiling-Suspended
24-42 mbh
4-Way Ceiling Cassette
9-42 mbh
Horizontal Ducted
9-42 mbh
Floor Standing
9-18 mbh
Multi-Position Air Handler
12-42 mbh

Trane®/Mitsubishi Electric M-Series Multi-Zone Ductless Split Systems

Outdoor Units:
M Series - Heat Pump
20-60mbh
M Series - Hyper-Heat
100% Heating Output at 5°F
20-48mbh

Indoor Units:
Wall Mounted
6-24mbh
Horizontal Ducted
9-18mbh
Floor Mounted Concealed
9-18mbh
4-Way Ceiling Cassette
9-15mbh
1-Way Ceiling Cassette
9-18mbh
Multi-Position Air Handler
12-36mbh

Trane®/Mitsubishi Electric Variable Refrigerant Flow

Air- Source Units: S-Series Heat Pump

PUMY – Heat Pump
Single Phase Power
3-5 tons available



Y-Series Heat Pump

PUHY Heat Pump
Three Phase Power
6-30 tons available



R2-Series Heat Recovery

PURY Heat Recovery
Three Phase Power
Simultaneous Heating and Cooling
6- 28 tons available



Hyper-Heat

Heat Pump or Heat Recovery
100% Heating Output at 0°F
6-16 tons available



Water-Source Units:

R2-Series Heat Recovery

PQRY Heat Recovery
Simultaneous Heating and Cooling
Single Module up to 20 tons
6- 28 tons available



Y-Series Heat Pump

PQHY Heat Pump
Single Module up to 20 tons
6-30 tons available



Indoor Units:

Wall-Mounted
6-30mbh



Four-Way Cassette – 33"x33"
& 22"x22", 5-48 mbh



One-Way Cassette
5-15mbh



Ceiling Suspended
15-36mbh



Horizontal Ducted
6-96mbh



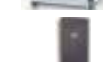
Floor Mounted Console
6-24mbh



Floor Mounted Concealed
6-24mbh



Multi-Position Air Handler
12-54mbh



Dedicated Outdoor Air Ducted
Indoor Unit



100% Outdoor Air
Processing Unit, Reheat
Option, 1200 CFM



Hydronic Unit
Refrigerant-to-Water Heat
Exchanger, 36 or 72mbh



Lossnay Energy Recovery Ventilator



Stand-alone or VRF Integrated
300, 470, 600, 1200 CFM
options

Consulting Engineer Portal



Trane offers expert HVAC systems, solutions, and support for every stage of a building lifecycle. Quick links to design and analysis tools, BIM drawings, prepackaged solutions, and energy analysis tools.

Visit trane.com, select Consulting Engineer

Trane Creative Solutions



Customized Trane Equipment Modifications Including Multizone Replacements, Water-Side Economizer Coils for Air-Cooled Chillers, Packaged Air-Cooled Ice Storage Systems; Acoustical Attenuation

Trane Control Systems



Tracer® Ensemble

Enterprise level building management software



Tracer SC

Scalable Web-Based Building Automation System Solution



Tracer Concierge

Bundled Building & Lighting Controls



Factory & Field

Mounted BACnet® & LonTalk® Unit Controllers. Integrates with BACnet MSTP, LonTalk Certified, BACnet/IP, Modbus® Protocols



Wireless Solutions

Communications-Zigbee® Certified, Temperature/Humidity Sensors

Trane Energy Management Systems and Services



Trane Intelligent Services

Aggregates data collected in a building. Provides tools to make real-time, near term, and long term decisions that maximize the way buildings are managed and maintained.



Trane Rental Services

Water-Cooled Chillers, Air-Cooled Chillers, Temporary Power, Cooling Towers, Packaged A/C Units, Air Handlers; Portable A/C Units

Trane Services



Reduce operating costs and extend the life of your equipment with planned maintenance from Trane

Affiliated Products



Sound & Vibration Attenuation Products
www.brd-nonoise.com



Absorbers of all types from 30 to 3300 tons
www.broadusa.com



Canaris Corporation; UL Listed Packaged Systems
www.canaris.com



Cooney Coil & Energy; Commercial & Industrial HVAC Supplies;
www.cooneycoil.com



EMI – Ductless Split Systems
www.enviromaster.com



Specialty Process Chillers
www.filtrine.com



Catalytic Air Cleaners; Advanced Filtration, Ultraviolet Lamps, & Photocatalysis
www.genesisair.com



Water-Cooled Chillers; Water-Cooled Condensing Units, Compressor Chillers, and Modular Chillers
www.nappstech.com



Quality Air Solutions
www.plasma-air.com



Energy Recovery Ventilators
www.renewaire.com



Air Management Solutions
www.semcohvac.com



Intelligent Automation Platform;
www.telkonet.com



Vertical High Rise Fan Coils
www.temspec.com



Trane Unit Modifications; Adapter Curbs; Seismic & Vibration Curbs
www.thybar.com

Strategic Partnerships



Lighting Solutions
www.graybar.com



Thermco
www.thermcoreps.com

Preferred Supplier



Cooling Towers & Fluid Coolers
www.spxcooling.com

Trane New York/New Jersey

Trane is an HVAC and energy solutions company. We create high-performing environments through our use of innovative technology and systems that optimize performance and maximize efficiencies.

ABOUT US

Trane has been making buildings better for more than 100 years. We were incorporated in 1913, just one year after Woodrow Wilson, former NJ governor, was elected president. In fact, the same year that we were incorporated the NY Times building was constructed, the new Grand Central Terminal was opened, and the NY Highlanders American League baseball team officially adopted the “Yankees” name.

We're proud to be an industry innovator and we presently hold 900 U.S. patents. We have four offices in the NY/NJ area with 300+ team members. More than 125 of those team members are professional technicians dedicated to providing outstanding service.

APPROACH

We take a creative approach to every project; treating each project uniquely so we can collaborate to understand objectives and goals. Trane delivers outcomes; we start from the beginning and follow the process through. Plus, we always keep sustainability and energy efficiencies top of mind.

SERVICE & SOLUTIONS

Our capabilities include commercial systems, energy services & solutions, contracting, controls/building automation, rentals and service.



COMMERCIAL SYSTEMS

We offer the full spectrum of HVAC solutions. Trane offers a solution for every unique HVAC need.

- Chillers, Unitary
- Air Handling Systems
- Terminal Devices
- Ductless
- Dedicated Air Systems & Components.



ENERGY SERVICES AND SOLUTIONS

From cost & energy efficiencies to sustainability, we offer a portfolio of energy services and solutions to help building owners impact their business.



CONTROLS/BUILDING AUTOMATION

Trane technology provides an intuitive, mobile platform that gives you the power and flexibility to manage your buildings more efficiently, thereby reducing cost and providing a better indoor environment and smaller environmental footprint.



CONTRACTING

Trane's full service contracting organizations provide start-to-finish solutions to any project. Our reliable services through project management, equipment and installation deliver a level of confidence to our customers that is unmatched by other suppliers.



RENTAL SERVICES

We offer a variety of equipment to help you with your temporary heating and cooling needs. Whether for seasonal outages or to sustain peak support times, Trane temporary chillers, air conditioning units and portable generators are ideal for your unique situation.



BUILDING SERVICES

Our engineers and technical specialists can provide the support you need to help you achieve the most cost-effective performance from your system. From the first day of new equipment installation through the life span of your equipment, we're here for you.

Sales Offices:**New York**

45-18 Court Square
New York, NY 11101
888.530.4922

Long Island

245 Newtown Road, Suite 500
Plainview, NY 11803
888.472.1993

Westchester

12 Skyline Drive
Hawthorne, NY 10532
914.593.0303

New Jersey

19 Chapin Road
Building B, Suite 200
Pine Brook, NJ 07058
888.602.1104

Parts Locations:**Pine Brook**

26 Chapin Road
Pine Brook, NJ 07058
973.882.3220

Teterboro

800 Huyler
Teterboro, NJ 07608
201.489.9001

Brooklyn

115 49th Street
Brooklyn, NY 11232
347.404.5814

Piscataway

South Plainfield
3005 Hadley Road #3
South Plainfield, NJ 07080
908.412.1001

Plainview

245 Newtown Road, Ste 500
Plainview, NY 11803
631.952.9477

Hawthorne

12 Skyline Dr
Hawthorne, NY 10532
914.593.0303

Long Island City

45-18 Court Square
Long Island City, NY 11101
718.269.3632

Ronkonkoma

87 Raynor Avenue
Ronkonkoma, NY 11779
516.874.7357

Visit TraneNYNJ.com to learn more.



Ingersoll Rand (NYSE:IR) advances the quality of life by creating comfortable, sustainable and efficient environments. Our people and our family of brands—including Club Car®, Ingersoll Rand®, Thermo King® and Trane®—work together to enhance the quality and comfort of air in homes and buildings; transport and protect food and perishables; and increase industrial productivity and efficiency. We are a \$14 billion global business committed to a world of sustainable progress and enduring results.



Trane, the Circle Logo, Let's Go Beyond, Optimus, CenTraVac, Agility, Sintesis, Stealth, Earthwise, CoolSense, VariTrane, UniTrane, Force-Flo, EcoWise, Impact, Precedent, Voyager, eFlex, Foundation, eStage, IntelliPak, Symbio, Horizon, Odyssey, Axiom, ProSpace, and Tracer are trademarks of Trane in the United States and other countries.

AHRI Certified and myTEST are registered trademarks of the Air-Conditioning, Heating, and Refrigeration Institute. ASHRAE and BACnet are registered trademarks of the American Society of Heating, Refrigerating, and Air-Conditioning Engineers, Inc. Modbus is a registered trademark of Modbus Organization. LonTalk is a registered trademark of Echelon Corporation. Zigbee is a registered trademark of Zigbee Alliance. City Multi is a registered trademark of Mitsubishi Electric US Inc. Mitsubishi Electric is a registered trademark of Mitsubishi Electric Corporation. All trademarks referenced in this document are the trademarks of their respective owners. All trademarks referenced in this document are the trademarks of their respective owners.

trane.com ingersollrand.com